

### Model O2M Musical Yacht Horn

Kahlenberg Model O2M is an eight trumpet musical air horn for megayachts and cruise vessels. Playable at the touch of a button from the vessel's main console, the O2M Musical Air Horn is supplied with a variety of pre-programmed songs. Additional songs can be added using an electronic keyboard. The model O2M Air Horn is offered in the configuration shown or in a "Low-Profile" design.



#### TECHNICAL DATA

Fundamental Frequencies: 196 to 392 Hz

S.P.L. (1/3 Octave @ 1 Meter): 132 dB

Air Consumption:

Appx. 14 C.F.M. @ 100 p.s.i., 7 l/s @ 7 bar

Air Pressure Required:

100 to 150 p.s.i., 7 to 10 bar  
(Higher pressures with optional regulators)

Electrical Power Required:

A.C. or D.C. Voltage

Material: Cast Bronze, Spun Brass

Net Weight: 125 lbs., 57 kg.

Finishes:

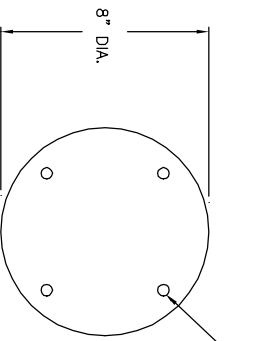
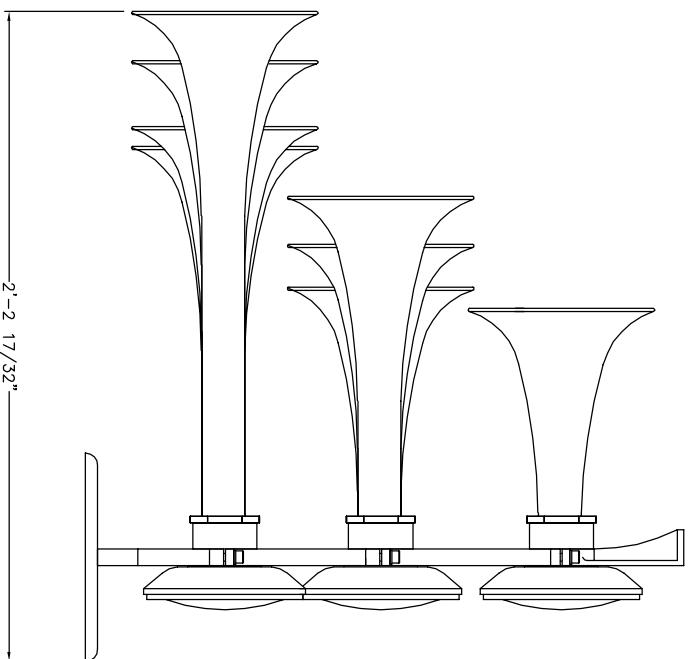
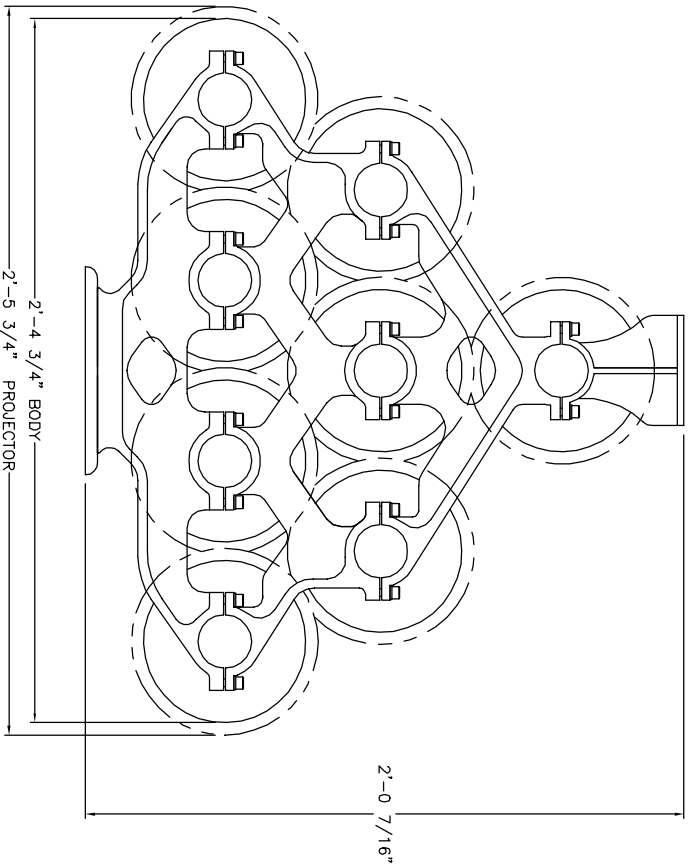
Kahlenberg Chrome Plate, TGIC Sky White Powdercoat, Gold or Black Chrome PVD

Dimensions:

26.5" x 29.75" x 24.5" (673x756x622)  
(dimensions without optional light)

- **BRONZE AND SPUN BRASS, TRIPLE CHROME PLATED, (other finishes available)**
- **PRE-PROGRAMMED SONGS PROVIDED**
- **EASY PROGRAMMING WITH EXTERNAL KEYBOARD**
- **MEETS OR EXCEEDS IMO/SOLAS REQUIREMENTS**
- **ONE OF A KIND SOUND FOR THE MOST EXCEPTIONAL YACHTS**

Conforming to International Maritime Regulations  
For Vessels Under 75 Meters in Length.



15/32" DIA. MOUNTING HOLE  
4-PLACES EQUALLY SPACED  
ON A 6 3/4" DIA. BOLT CIRCLE

**TECHNICAL DATA**

Frequency: 196 Hz, 220 Hz, 247 Hz, 261.6 Hz, 293.6 Hz  
 329.6 Hz, 349.2 Hz, & 392 Hz.  
 Sound Pressure Level (dB(A) at 1 meter): 139db  
 Sound Pressure Level (1/3 octave at 1 meter): 132db  
 Air Consumption: appx. 21 CFM @ 150 P.S.I.  
 Air Pressure Req: 100 To 250 P.S.I.  
 Electric Power: Any Standard A.C. or D.C. voltage  
 Material: Spun Brass & Cast Bronze  
 Net Weight: (Horn Only) 125 Lbs.  
 Shipping Weight: 380 Lbs.

Price: \$ \_\_\_\_\_ U.S.D. Net. Ea.  
 (Valid for 60 days, F.O.B. Two Rivers, WI, U.S.A.)

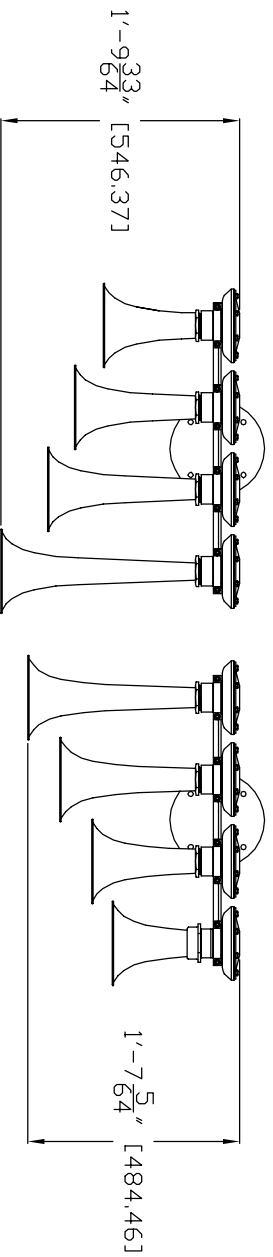
*Kahlenberg's*

KAHLENBERG BROS. CO. TWO RIVERS, WI. U.S.A.

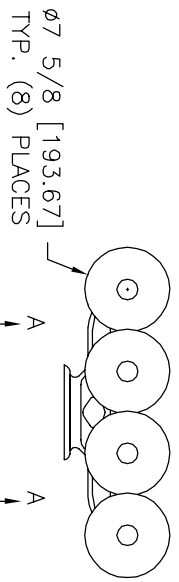
**OUTLINE DIMENSIONS  
 MODEL 02M-8 TRUMPET  
 AIRHORN**

DATE	DRWG. NO.	REV.
05/01/01	3-5851	A EMK

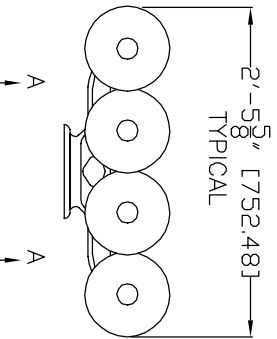
Conforming to International Maritime Regulations  
For Vessels Under 75 Meters in Length.



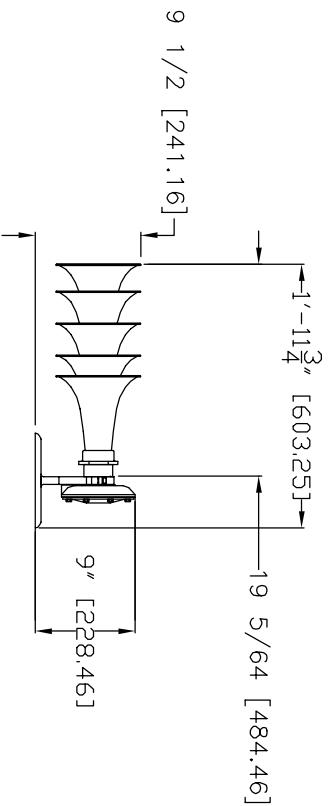
TOP VIEW



FRONT ELEVATION



SIDE ELEVATION



TECHNICAL DATA

Frequency: 196 Hz, 220 Hz, 247 Hz, 261.6 Hz, 293.6 Hz  
329.6 Hz, 349.2 Hz, & 392 Hz.  
Sound Pressure Level (dB(A) at 1 meter): 139db  
Sound Pressure Level (1/3 octave at 1 meter): 132db  
Air Consumption: appx. 21 CFM @ 150 P.S.I.  
Air Pressure Req: 100 To 250 P.S.I.  
Electric Power: Any Standard A.C. or D.C. voltage  
Material: Spun Brass & Cast Bronze  
Net Weight: (Horn Only) 125 Lbs.  
Shipping Weight: 380 Lbs.



KAHLENBERG BROS. CO. TWO RIVERS, WI. U.S.A.

**OUTLINE DIMENSIONS**  
**MODEL 02M-8 TRUMPET**  
**LOW PROFILE AIRHORN**

Price: \$ \_\_\_\_\_ U.S.D. Net. Ea.  
(Valid for 60 days, F.O.B. Two Rivers, WI. U.S.A.)

DATE	DRWG. NO.	REV.
05/01/01	3-5902	A EMK